

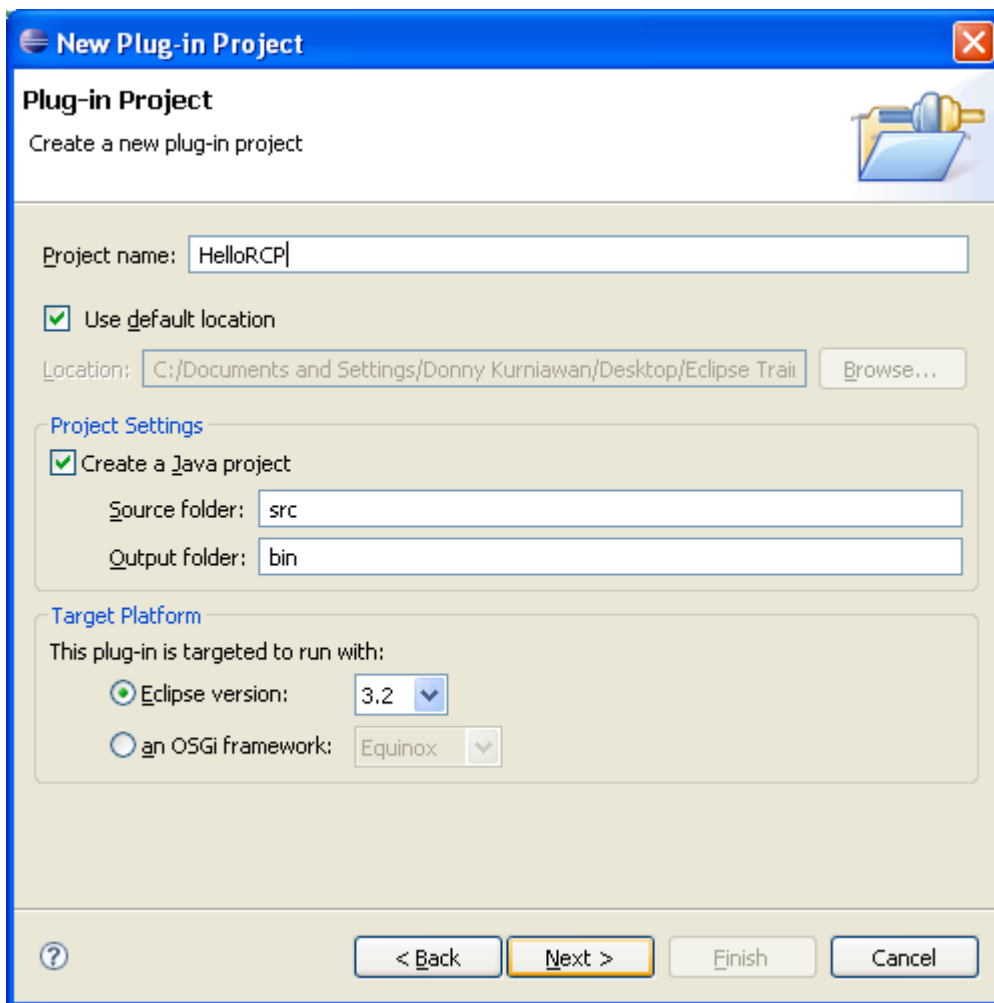
Tutorial 08: A Simple Rich Client Platform Example

Contents:

1. Creating an RCP project.
2. Running an RCP application.
3. Creating an RCP product.


Creating an RCP project

1. Switch to the Plug-in Development perspective.
2. Click File > New > Project...
3. Select Plug-in Development > Plug-in Project.
4. Name the new project, HelloRCP.



5. Enter the following properties, and click Next.

New Plug-in Project ✕

Plug-in Content 

Enter the data required to generate the plug-in.

Plug-in Properties

Plug-in ID:

Plug-in Version:

Plug-in Name:

Plug-in Provider:

Classpath:

Plug-in Options

Generate an activator, a Java class that controls the plug-in's life cycle

Activator:

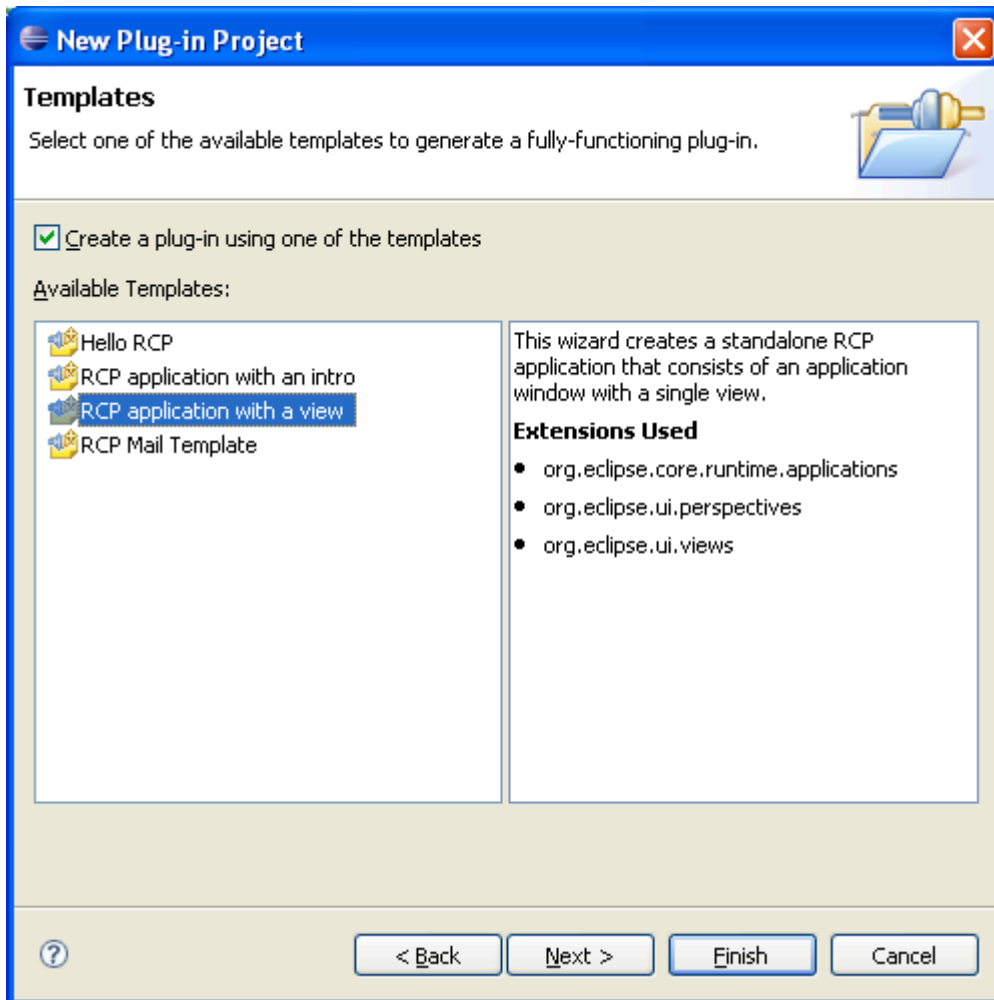
This plug-in will make contributions to the UI

Rich Client Application

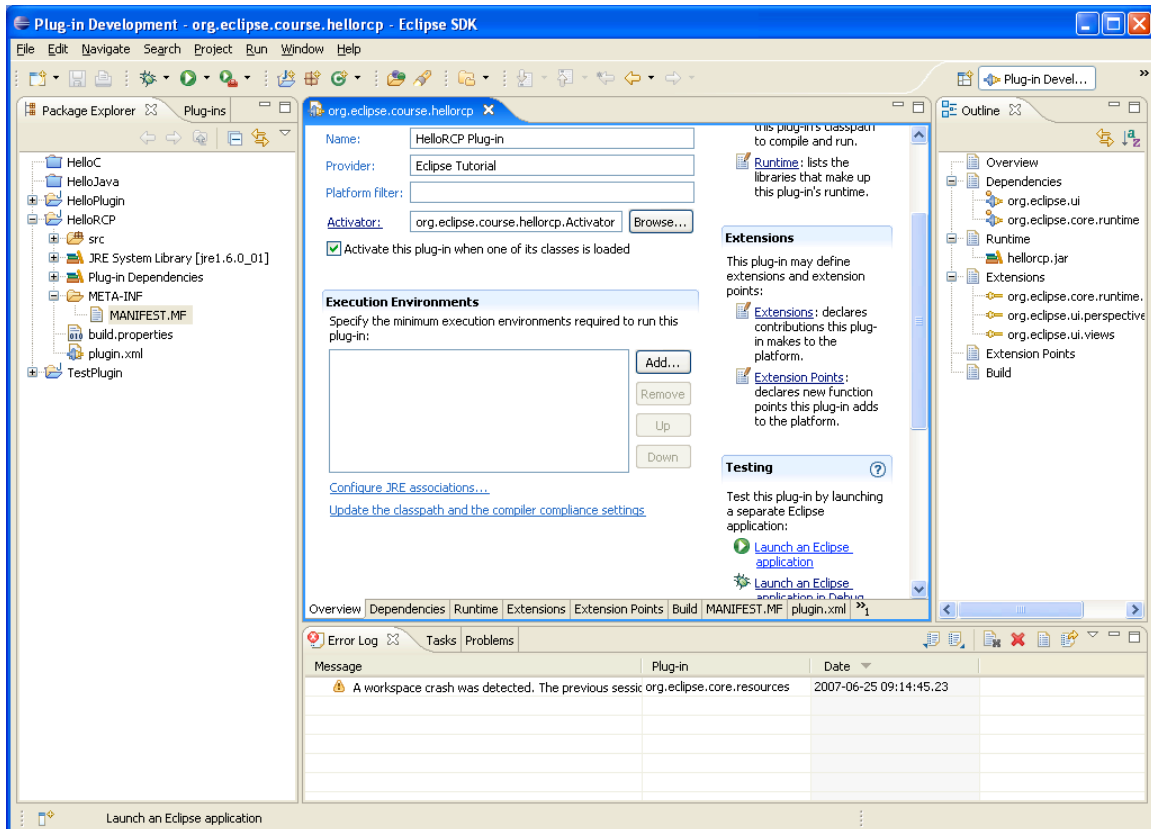
Would you like to create a rich client application? Yes No

?

6. Select “RCP application with a view”, and click Next.

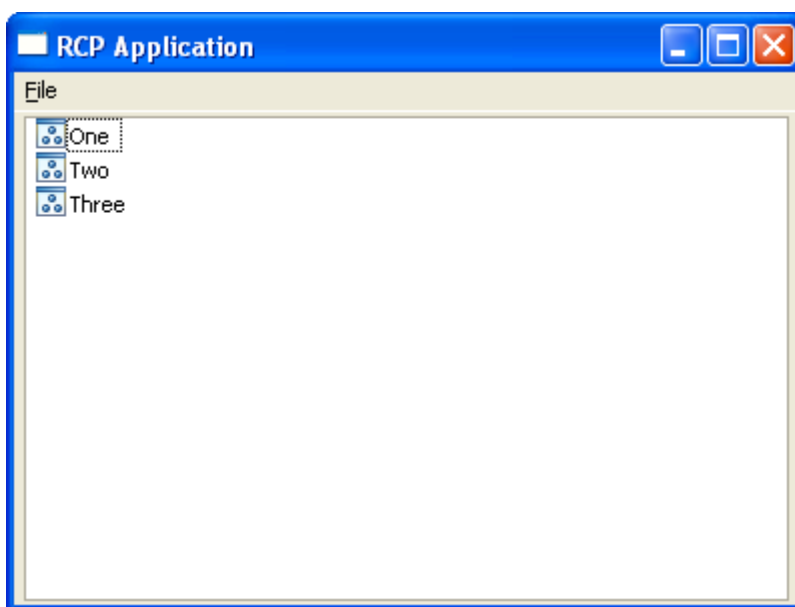


7. Accept the default options and click Finish.

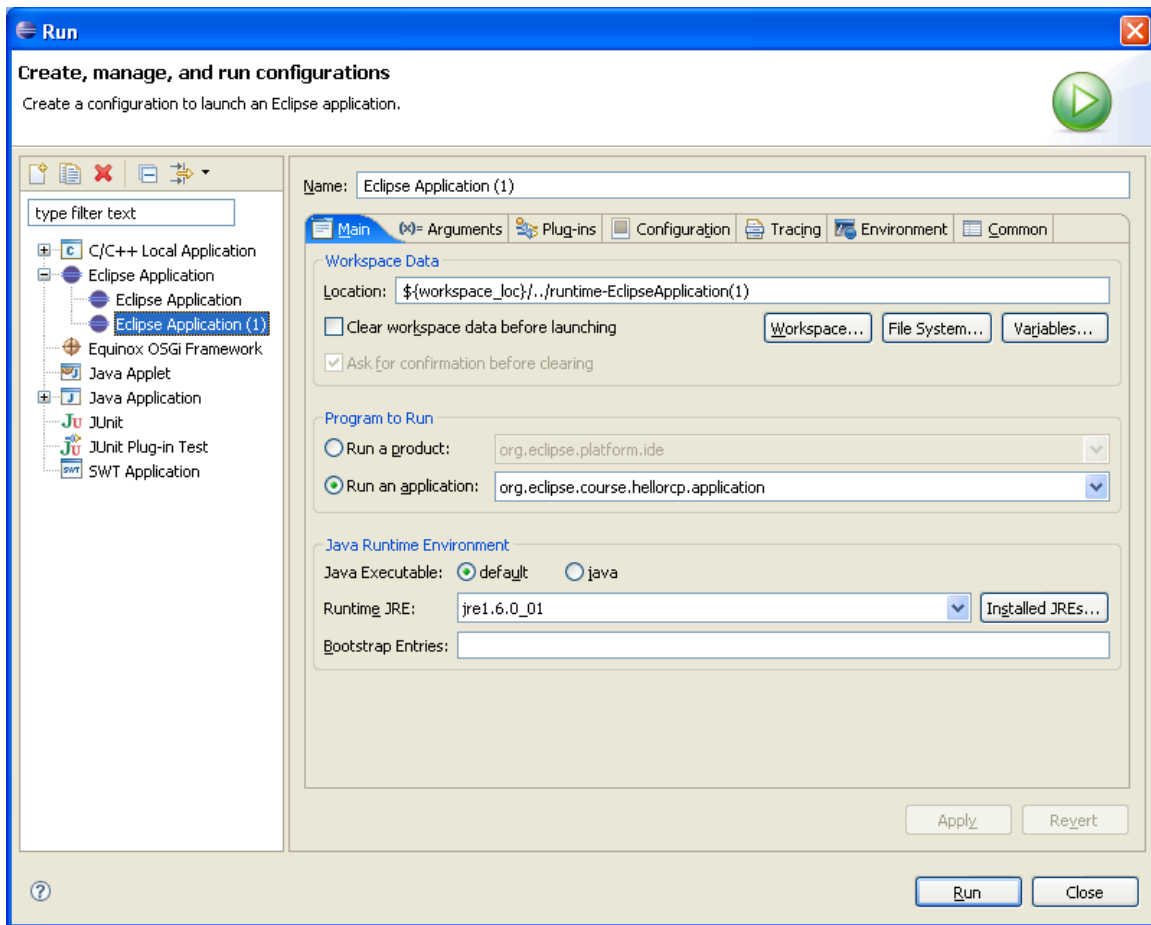


Running an RCP application

1. To test the RCP application, double-click MANIFEST.MF, click the Overview tab, and click Launch an Eclipse application in the Testing section.



2. Quit the RCP Application. Open up the Launch Configurations window (Run > Run...)

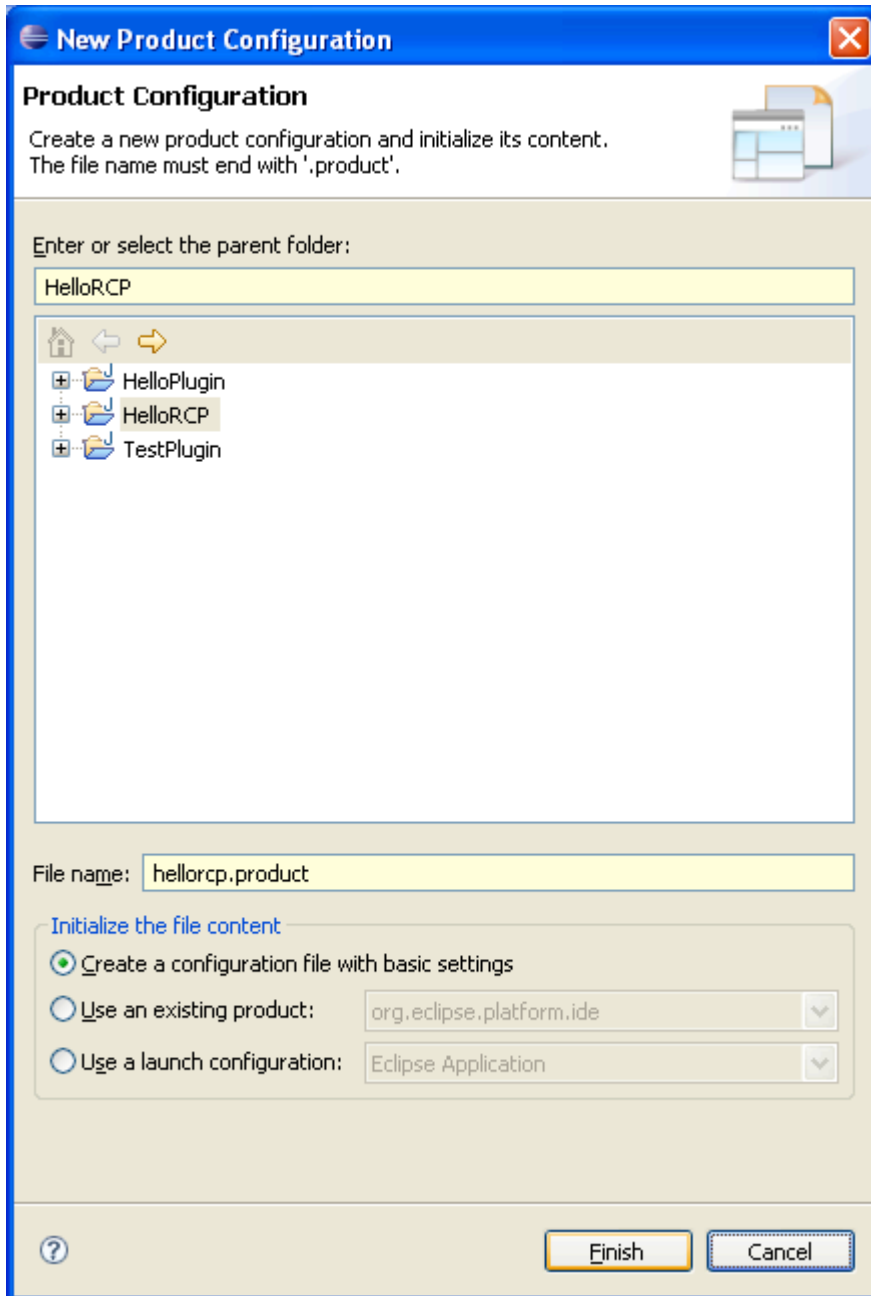


3. Examine the differences between Eclipse Application launch configuration and Eclipse Application (1) launch configuration.

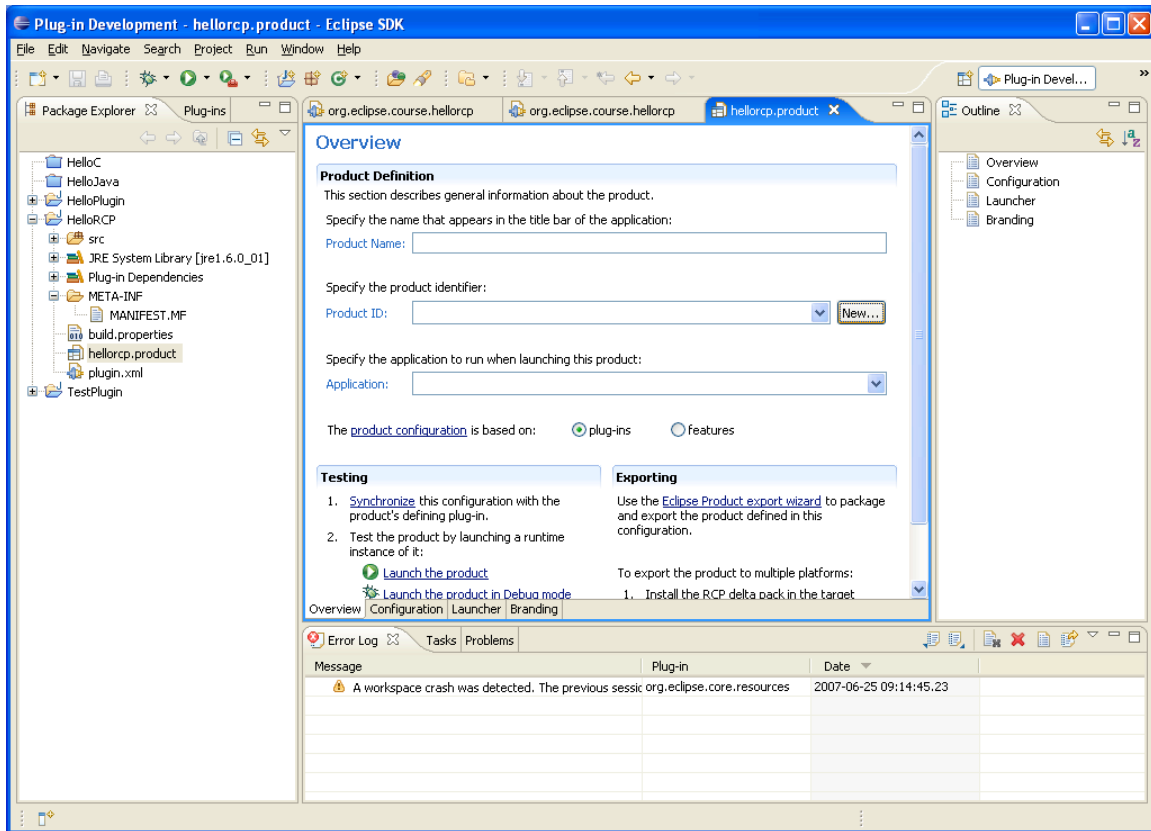
In Eclipse terms a product is everything that goes with your application, including all the other plug-ins it depends on, a command to run the application (called the native launcher), and any branding (icons, etc.) that make your application distinctive. Although as we've just seen you can run a RCP application without defining a product, having one makes it a whole lot easier to run the application outside of Eclipse.

Creating an RCP product

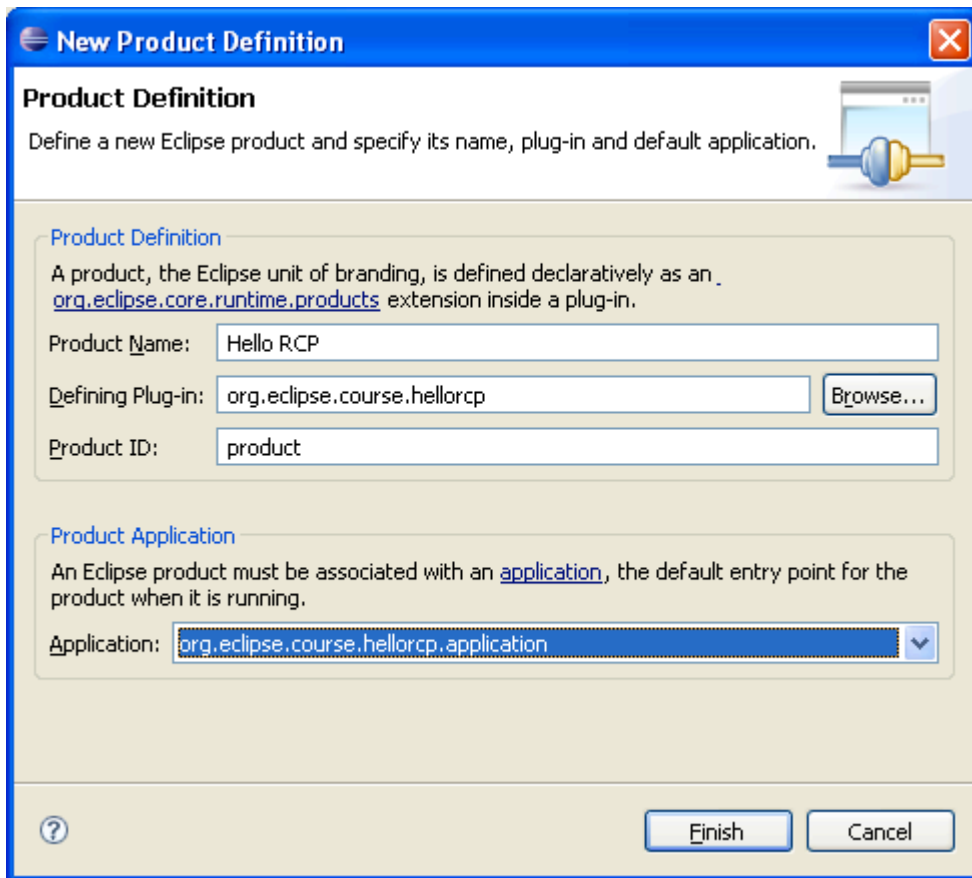
1. Select and right-click HelloRCP in the Package Explorer view, and select New > Product Configuration.



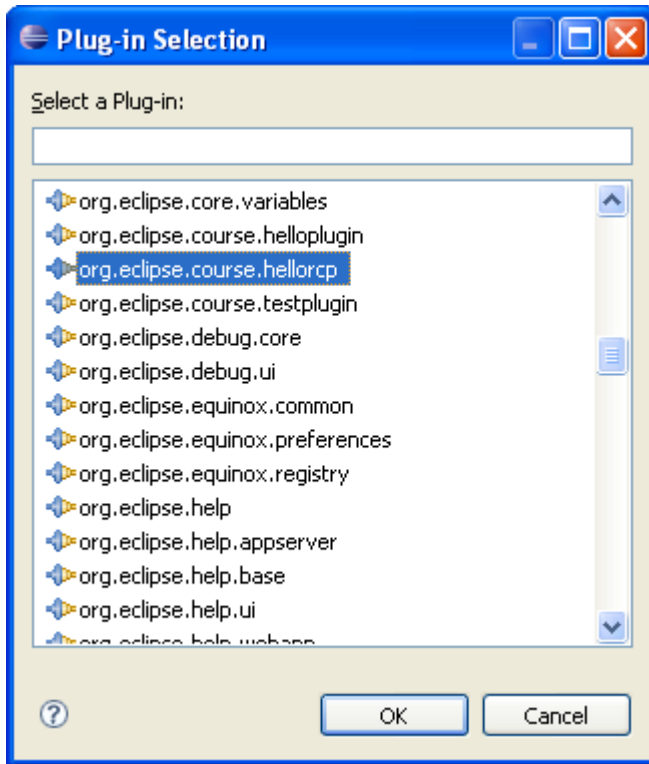
2. Enter hellorcp.product as the file name and click Finish.
3. Double-click hellorcp.product and click the Overview tab.



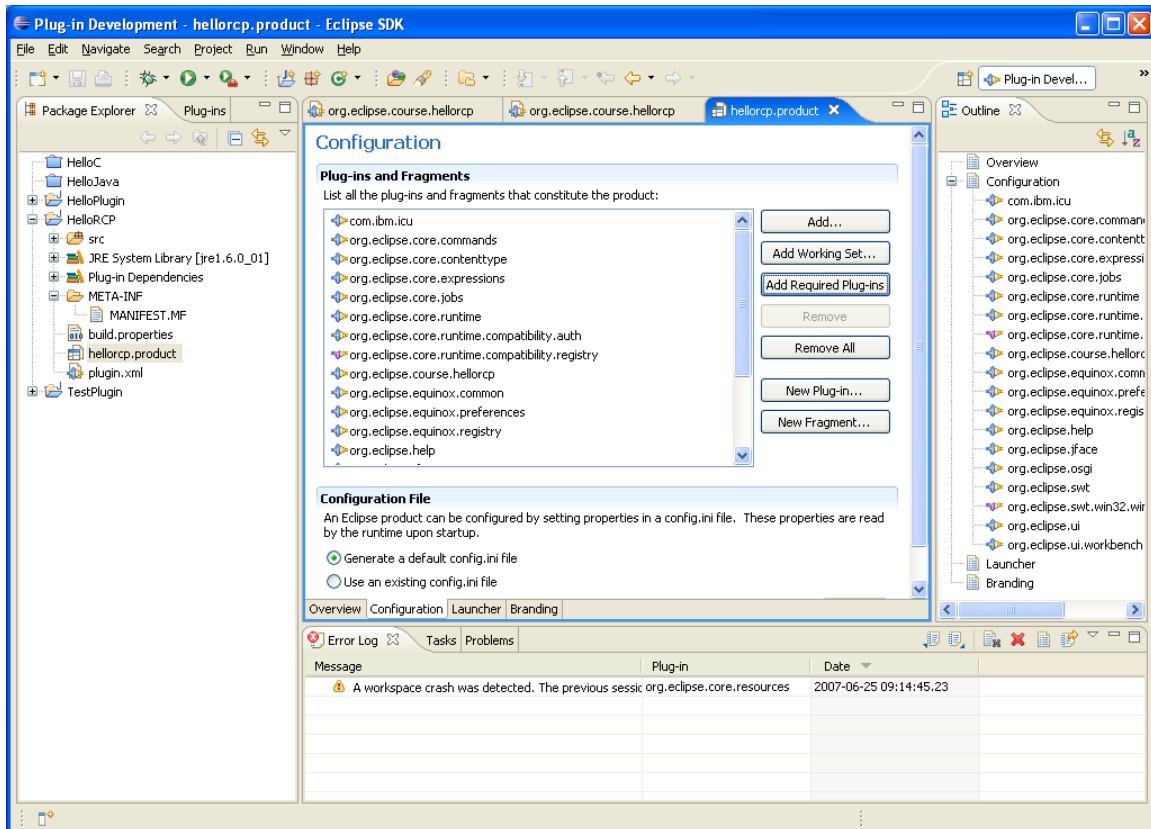
4. Click New... (next to the Product ID).



5. Change the configuration as above and click Finish.
6. Click the Configuration tab of hellorcp.product, and click Add...



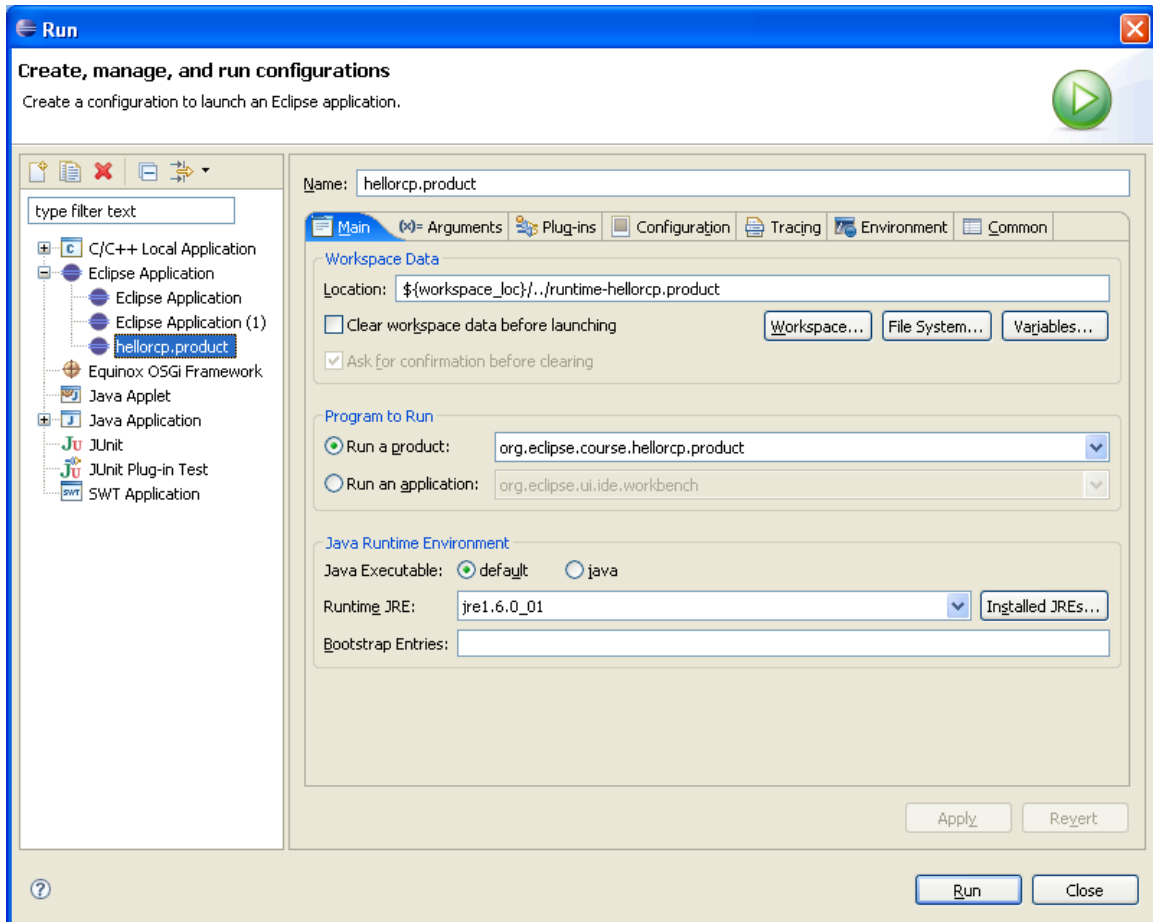
7. Select org.eclipse.course.hellorcp and click OK.
8. Click Add Required Plug-ins.



9. Click File > Save.

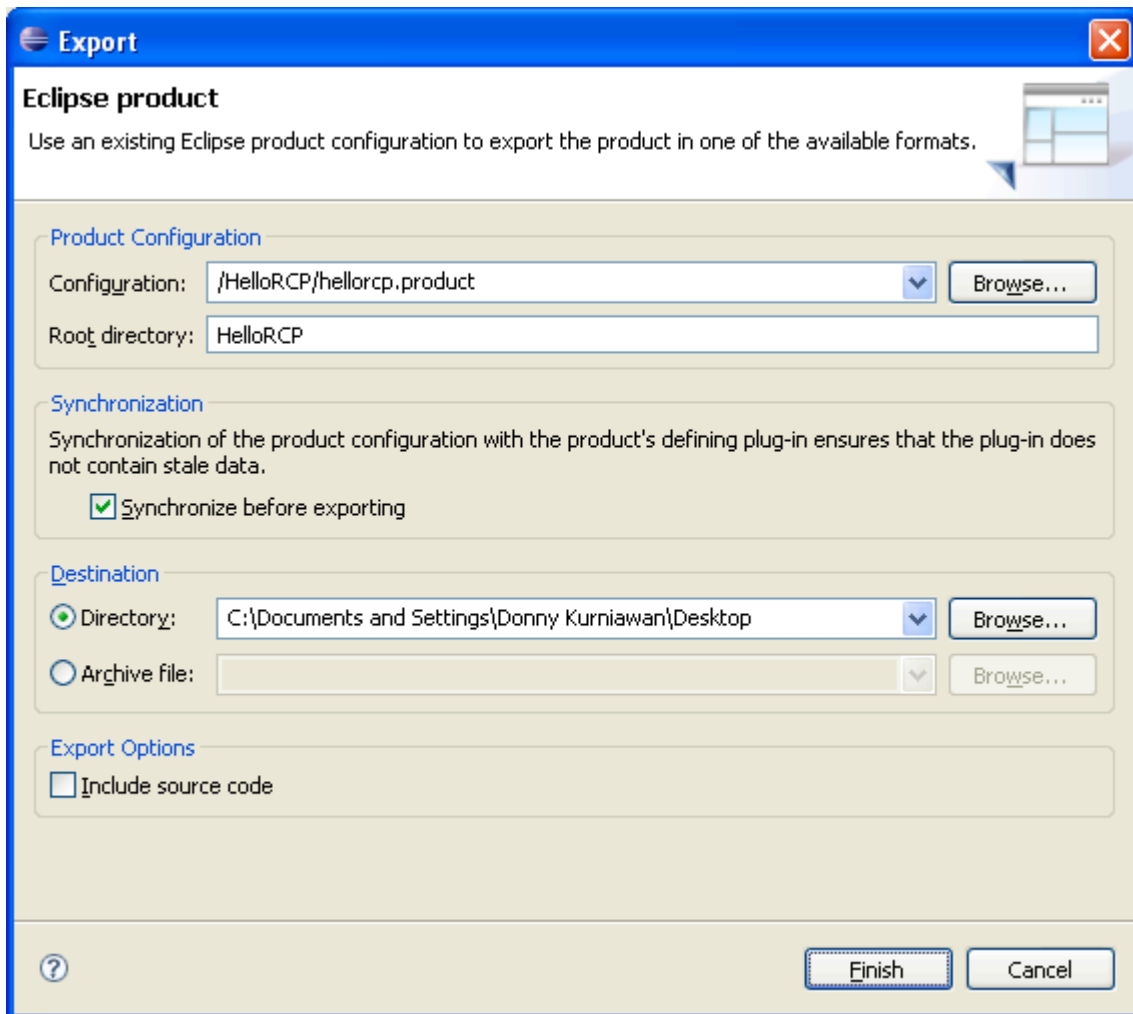
10. Click the Overview tab of hellorcp.product and click Launch the product in the Testing section.

11. Quit the RCP Application. Open up the Launch Configurations window (Run > Run...)



12. Examine the differences between Eclipse Application, Eclipse Application (1), and hellorcp.product launch configurations.

13. Double-click hellorcp.product and click the Overview tab. Click Eclipse Product export wizard in the Exporting section.



14. Change the configuration as above and click Finish.
15. Go to your Desktop, double-click the HelloRCP folder, and double-click eclipse.exe.